



**REGIONAL SPECIALISED METEOROLOGICAL CENTRE-TROPICAL CYCLONES, NEW DELHI
TROPICAL WEATHER OUTLOOK**

DEMS-RSMCTROPICALCYCLONESNEWDELHIDATED 02.02.2025

TROPICAL WEATHER OUTLOOK FOR THE NORTH INDIAN OCEAN (THE BAY OF BENGAL AND THE ARABIAN SEA) VALID FOR THE NEXT 168 HOURS ISSUED AT 0600 UTC OF 02.02.2025 BASED ON 0300 UTC OF 02.02.2025.

BAY OF BENGAL:

Scattered low and medium clouds with embedded isolated weak to moderate convection lay over south Bay of Bengal and Andaman Sea.

***PROBABILITY OF CYCLOGENESIS (FORMATION OF DEPRESSION) DURING NEXT 168 HRS:**

24 HOURS	24-48 HOURS	48-72 HOURS	72-96 HOURS	96-120 HOURS	120-144 HOURS	144-168 HOURS
NIL	NIL	NIL	NIL	NIL	NIL	NIL

***NOTE: EVERY 24HR FORECAST IS VALID UPTO 0300 UTC (0830 IST) OF NEXT DAY**

ARABIAN SEA:

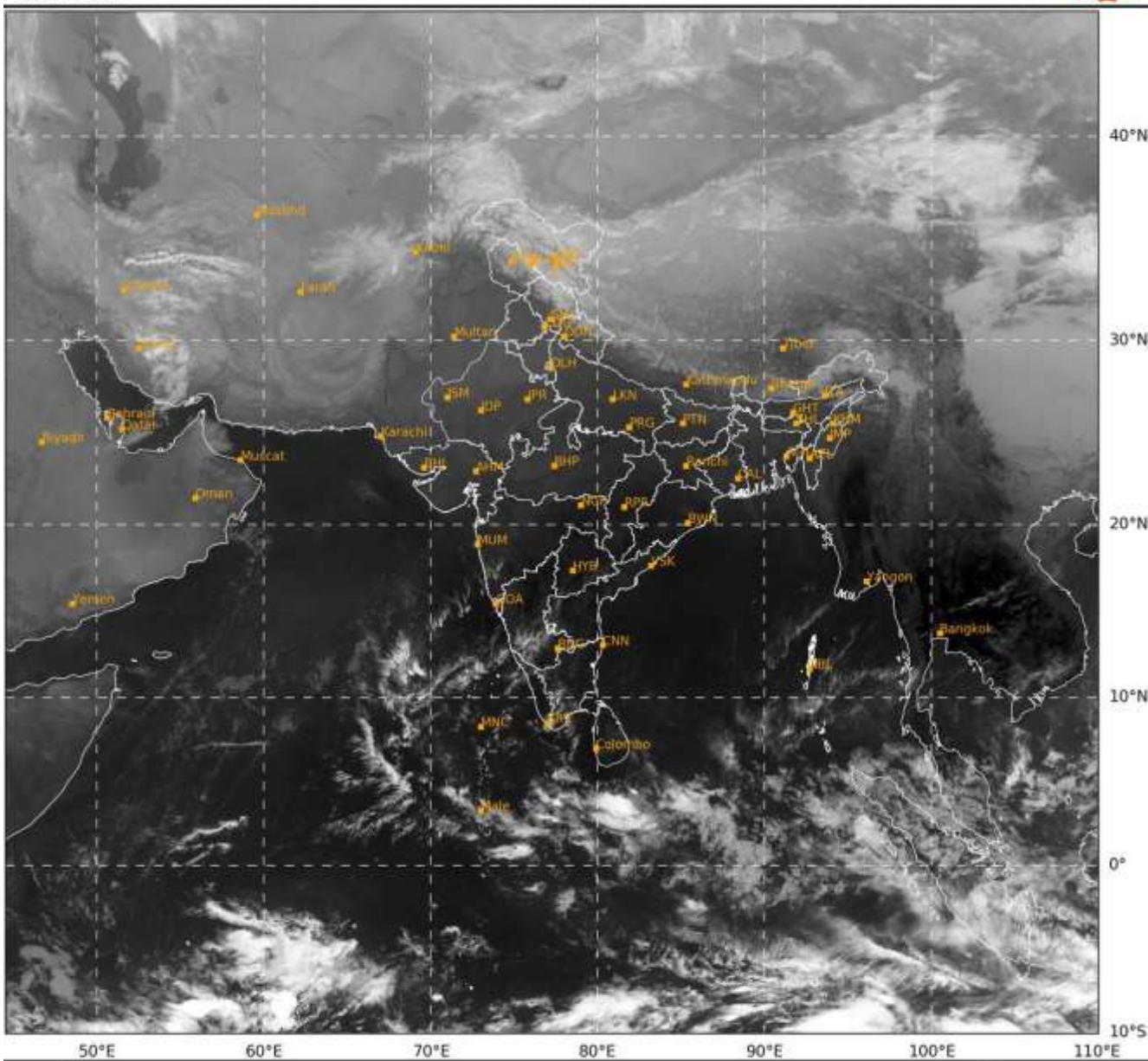
Scattered low and medium clouds with embedded moderate to intense convection lay over southeast Arabian Sea, Maldives & Comorin area. Scattered low and medium clouds with embedded weak to moderate convection lay over eastcentral Arabian Sea & Lakshadweep Island areas and southwest Arabian Sea.

***PROBABILITY OF CYCLOGENESIS (FORMATION OF DEPRESSION) DURING NEXT 168 HRS:**

24 HOURS	24-48 HOURS	48-72 HOURS	72-96 HOURS	96-120 HOURS	120-144 HOURS	144-168 HOURS
NIL	NIL	NIL	NIL	NIL	NIL	NIL

***NOTE: EVERY 24HR FORECAST IS VALID UPTO 0300 UTC (0830 IST) OF NEXT DAY**

REMARKS: NIL



409

924

IMD, DELHI

Cloud distribution: (a) Isolated: <25%, Scattered:25-50%, Broken: 51-75%, Solid:>75%, Convection Intensity: (a) Weak: Cloud Top Temperature(CTT)>-25°C,(b)Moderate:CTT:-25°Cto-40°C,(c)Intense:CTT: -41°Cto -70°Cand(d)VeryIntense::Lessthan -70°C
PROBABILITYOFCYCLOGENESIS(FORMATIONOFDEPRESSION):NIL:0%,LOW:1-33%,MODERATE:34-66%ANDHIGH:67-100%
ThisisaguidanceBulletinforWMO/ESCAPPanelMembercountries.VisitrespectiveNationalwebsitesforCountryspecificBulletins